



Newton Cemetery & Arboretum

THE KNOLL DEVELOPMENT COMMUNITY PRESENTATION

MARCH 22, 2022



PRESENTATION AGENDA

This is the agenda for the meeting March 22nd :

- Introductions
- Meeting Objective
- Cemetery & Arboretum Goals
- Project Overview
 - Project Site & Scope
 - Community Considerations
 - Anticipated Project Schedule
 - Compliance
- Summary
- Community Resource
- Questions



NEWTON CEMETERY CORPORATION

- Private, **non-profit organization** serving the needs of **all faiths for Newton** and the Boston area
- The corporation is governed by volunteer Trustees, whom are **Newton residents** with expertise that benefit the Cemetery & Arboretum
- The Board of Trustees are responsible for the overall management of the corporation to ensure the organization will be **financially sustainable in perpetuity** (following the final sales of burial products)

PROJECT TEAM

Owner:

Newton Cemetery Corporation

- Board of Trustees
- Planning Committee
- Staff

Landscape Architect:

IBI Group Boston

Owner's Representative:

Anser Advisory



MEETING OBJECTIVES

Two meeting objectives:

1. Introduce proposed Knoll & J-North Development Project
2. Gather & listen to community questions

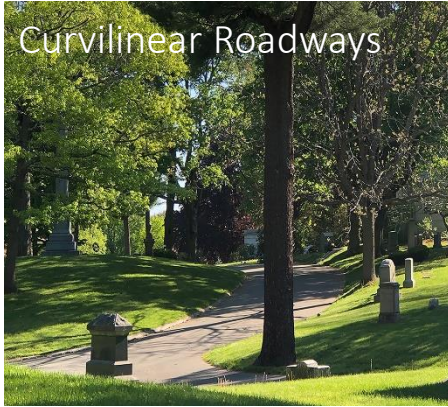


CEMETERY & ARBORETUM GOALS

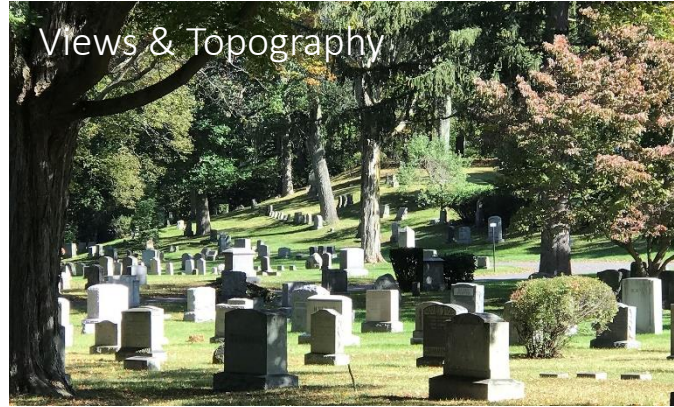
- Develop land for **future burial and operations space**
- Expand the environmental benefits of the Arboretum
- Expand the **“garden cemetery”** while providing opportunities for a **variety of burial and memorialization options for the community**
- Prepare for transition from an **active cemetery to a cultural institution**
- Provide **long-term community benefits and resources**, including improved landscapes and expanded walking paths

GARDEN CEMETERY & ARBORETUM : QUALITIES

Curvilinear Roadways



Views & Topography



Historic
Monuments



Mature Trees



Water Features

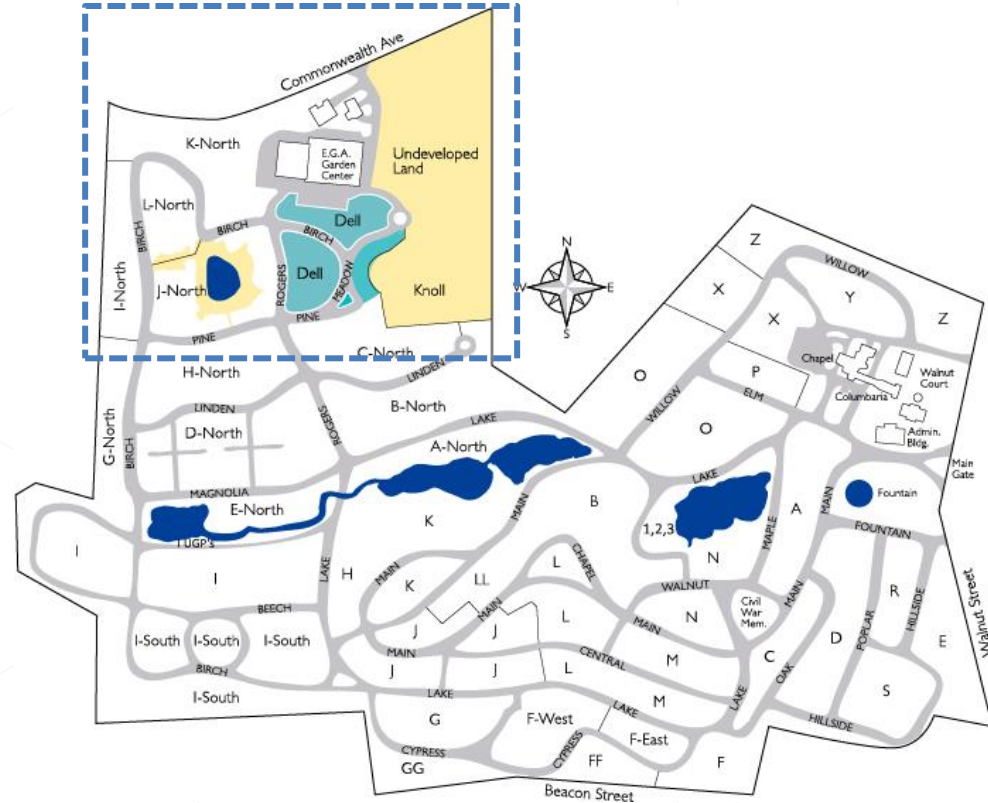
A scenic landscape featuring a stone bridge over a stream, a large tree with pink blossoms, and a cemetery in the background. The scene is set in a lush green area with a clear blue sky. The text "PROJECT OVERVIEW" is centered in the middle of the image.

PROJECT OVERVIEW

PROJECT SITE

The **Project site** is comprised of two parcels owned by Newton Cemetery Corporation **within the existing boundaries** of the Cemetery:

- **Undeveloped Land** – Location of the proposed expansion. Total area is approx. seven acres. Adjacent to the recently developed “Dell”
- **J North** - Existing burial space, area is approx. 2.5 acres



PROJECT SITE

Undeveloped Land – The proposed expansion will develop approx. **4.5 acres for burial space**, which includes **screen plantings** along the eastern property line. The remaining acreage, approx. 2 acres, will continue to be Cemetery **operations space**.

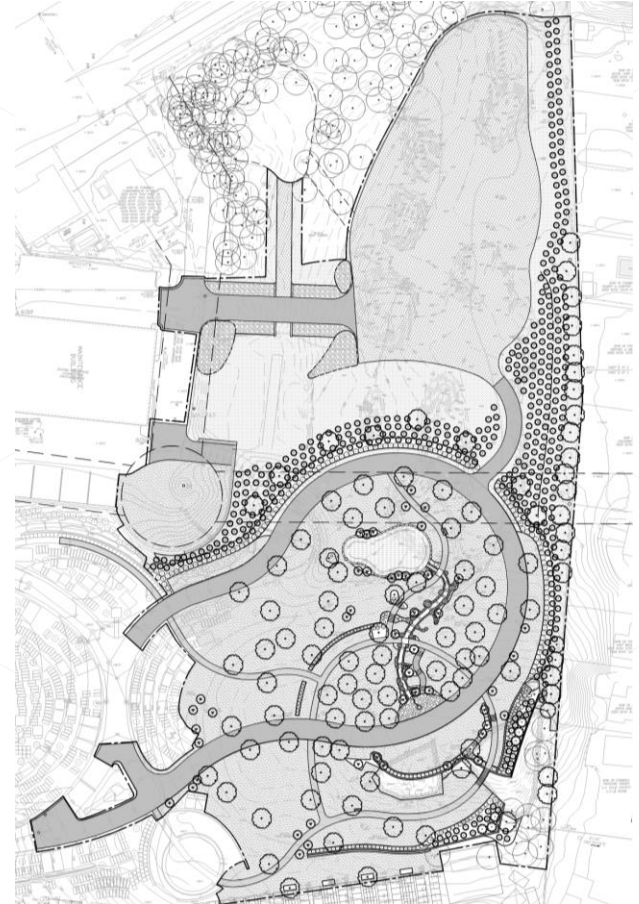
Existing J North – Approximately **.5 acre** will be developed within the existing interment space.



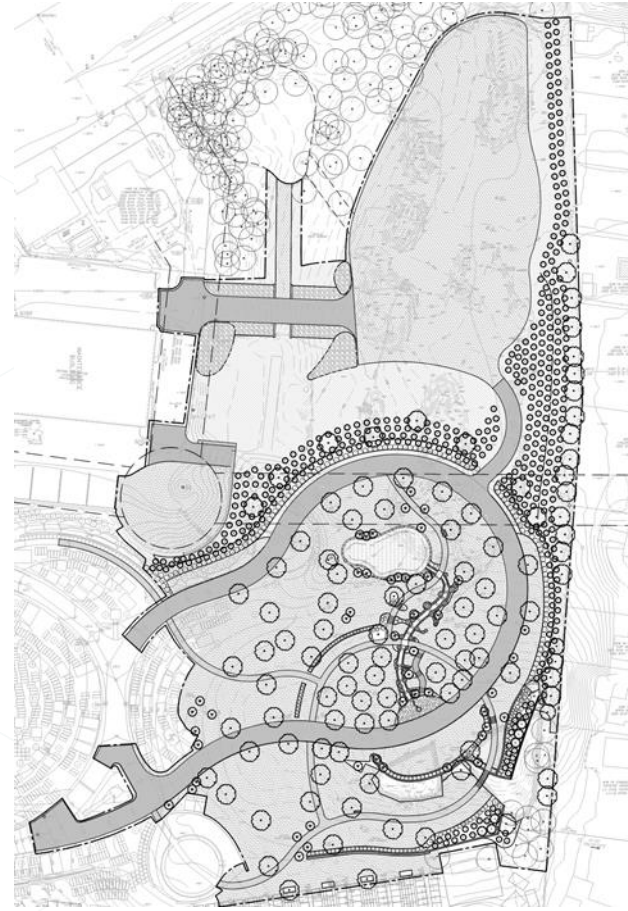
PROJECT SCOPE: THE KNOLL

Major Scope of Work:

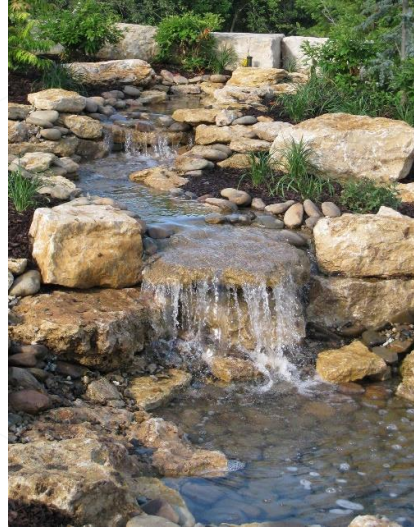
- Tree work
- Limited ledge removal
- Earthwork, soil processing and rock crushing
- Landform shaping for burial space
- New roadways and paths
- Construction of water features
- Screen planting at limits of development
- New terrace for community gatherings and burial ceremonies



EXISTING CONDITIONS

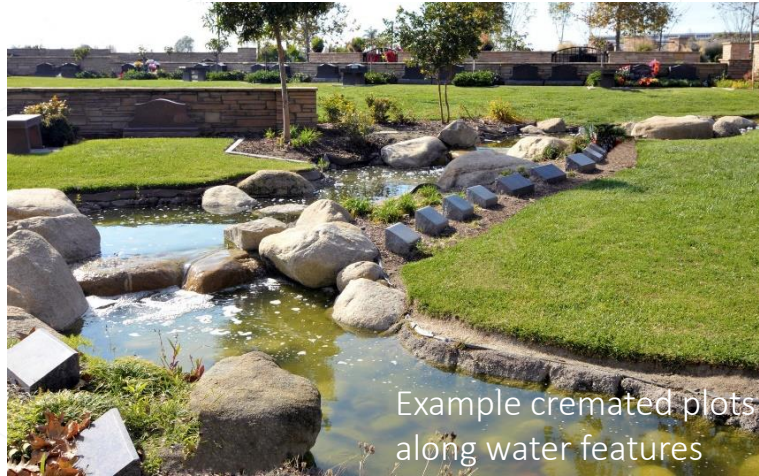
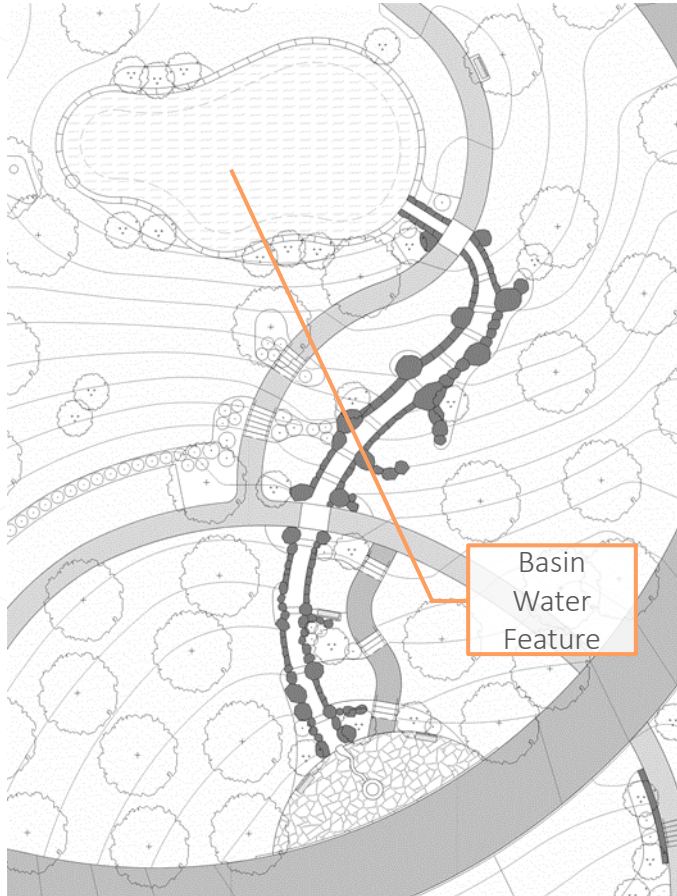


DESIGN: AESTHETIC QUALITIES



Example flowing water features

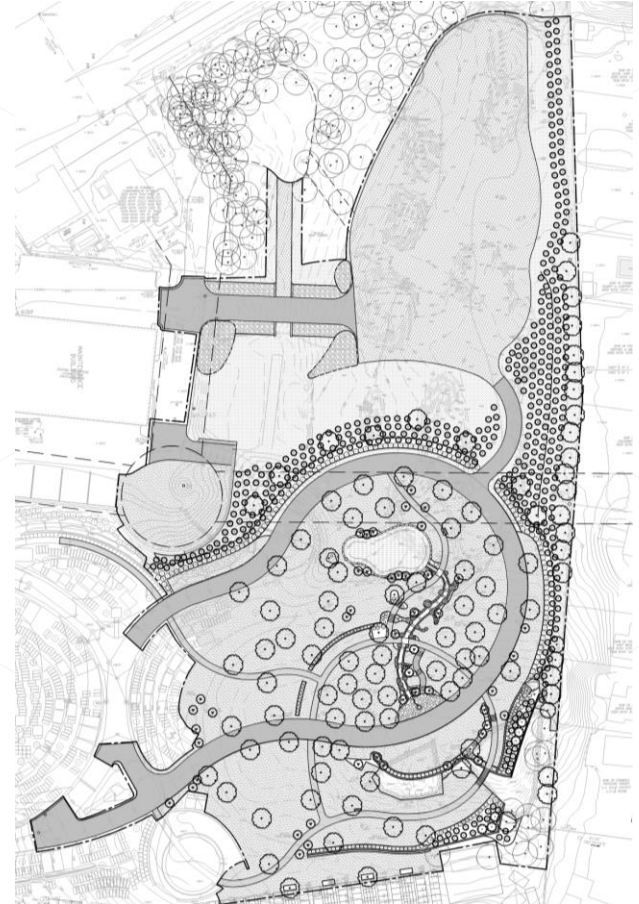
DESIGN: AESTHETIC QUALITIES



Example vegetation

PERIMETER ENHANCEMENTS

- Screen plantings to **enhance privacy** for neighbors
- Planting over **700 native trees** mostly in **The Knoll** to enhance the arboretum, offer greater resiliency to climate change, provide native habitat for birds and to enhance the urban forest.
- Stormwater system to **retain and manage runoff** on Cemetery property
- Lower grade at operations space to **reduce visibility and sound transmission**



SCREEN PLANTINGS: EXAMPLES



Neighborhood
Screen Plantings



Top Image: Dell – 2014; Bottom Image: Dell - 2021

Successful Screen Plantings

PROJECT SCOPE: J NORTH

In addition to the development of the Knoll, we will **expand burial capacity** at J-North

Scope of Work Includes:

- Reconstruction of the lagoon stone wall
- Planting new native shade and flowering trees
- Replacement of pedestrian paths



Existing Conditions of J North



ANTICIPATED PROJECT SCHEDULE

Design Phase Complete	June 2022
Bid Period	June – July 2022
Contractor Engaged	July – August 2022
Construction*	August 2022 – November 2023
Planting	Spring 2024

* Estimated duration subject to change



COMMUNITY CONSIDERATIONS

We will manage & control construction activities to reduce community impact:

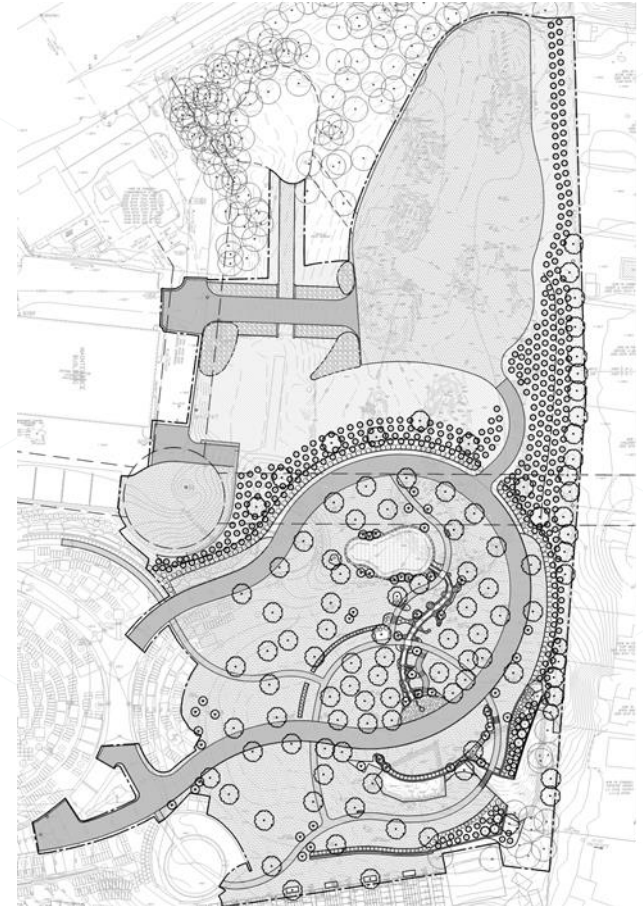
- Tree work
- Limited ledge removal
- Earthwork, soil processing and rock crushing
- Dust
- Soil Erosion

NC&A will develop a project webpage to provide monthly updates on anticipated construction activities

Typical work hours will be: 7 AM – 3 PM

All work will be performed in compliance with Newton Noise Ordinance. (Weekdays: 7 AM – 7 PM, Saturdays: 8 AM – 7PM)

Questions and concerns – contact Melissa immediately (business cards available today)



COMMUNITY CONSIDERATIONS

We will manage & control construction activities to reduce their impact, including:

- Where possible, we will schedule the initial earthwork activities during colder months (when windows are closed)

We will perform the following precautionary procedures:

- Optional pre-construction surveys of North St. properties to establish baseline records of existing conditions prior to the start of construction
- Air quality testing will be performed during earthwork construction activities to track and document air quality



COMPLIANCE

Project Permitting

The project is undergoing City of Newton and Commonwealth required permitting.

Code Requirements

The project has been designed and will be constructed in compliance with the applicable codes.



S U M M A R Y

- Develop land for **future burial and operations space**
- Expand the environmental benefits of the Arboretum
- Expand the “**garden cemetery**” while providing opportunities for a **variety of burial and memorialization options for the community**
- Prepare for transition from an **active cemetery to a cultural institution**
- Provide **long-term community benefits and resources**, including improved landscapes and expanded walking paths

COMMUNITY RESOURCE

- NC&A is an accredited **Level II Arboretum**, with over 100+ species collection and dedicated arboriculture staff
- Provides **variety of burial space** for City of Newton residents and the surrounding community
- Provides **open space and botanic gardens** that are visited by the public daily
- Improves **species diversity and tree health** through the implementation of NC&A's Horticultural Master Plan, including a **50 tree/yr planting plan** with goals of preserving and increasing the urban forest
- Provides robust **education and public programs**, including walking and bird watching tours
- Grows and **donates plants** for Newton Community Pride in the greenhouse



A scenic landscape featuring a stone bridge over a stream in the foreground. A large, mature tree stands on the right, and a cemetery with several headstones is visible in the background. The scene is set in a lush, green environment with a clear blue sky.

QUESTIONS